

Enhance Workplace Experience & Efficiency

Benefits

- Enhance employee well-being & safety
- Smarter energy and space utilization
- Agile, informed workspace decisions
- Cost-efficient deployment with fast ROI
- Secure end-to-end by design

Digital Twin Robotics Platform

VirBrix, powered by GlobalDWS, is a digital twin hardware and software solution that inspects and analyzes the health & safety, occupancy, physical security and ESG of workplace environments.

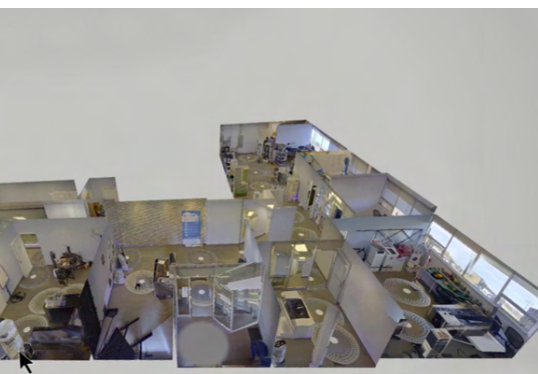
Available for prompt inspection projects or full-scale facility deployment, VirBrix fuses real-time data collection with advanced data visualization tools and our predictive AI to empower decision makers to quickly and easily optimize resource utilization and improve employee experience.

Why VirBrix?

- Autonomous space scanning
- Real-time data collection & analysis
- Automated resource management
- AI-powered physical security
- Flexible and fast integration



Ideal for inspection, monitoring and transforming commercial offices, warehouses & indoor public spaces



Transforming Workspaces with Intelligence: The VirBrix Edge

“ VirBrix has transformed our office into a smart, efficient workspace. Its AI-driven system effortlessly monitors our environment, leading to a noticeable improvement in air quality and employee well-being. It's user-friendly and unobtrusive, making it an essential part of our daily operations. Highly recommended for any forward-thinking company! ”

- James W. (Environmental Services Facility Manager)

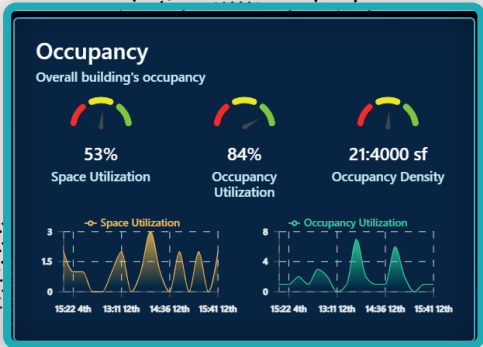
Health & Safety

Elevating health & safety in modern workplaces

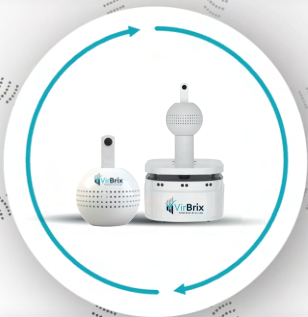


Occupancy

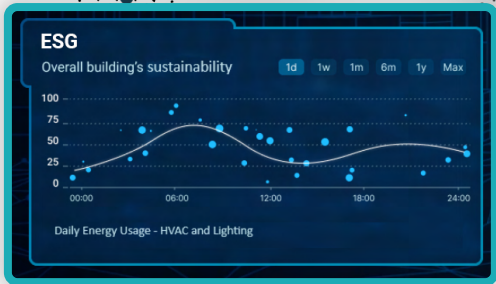
Optimizing space utilization & saving cost



Experience



Efficiency



ESG

Supporting Enterprise net-zero emission goals

Physical Security

Improving Physical security & threat detection